

# NICE HOUSE



SAMUEL G. WHITE

# LAKESIDE COTTAGE

New Preston, Connecticut

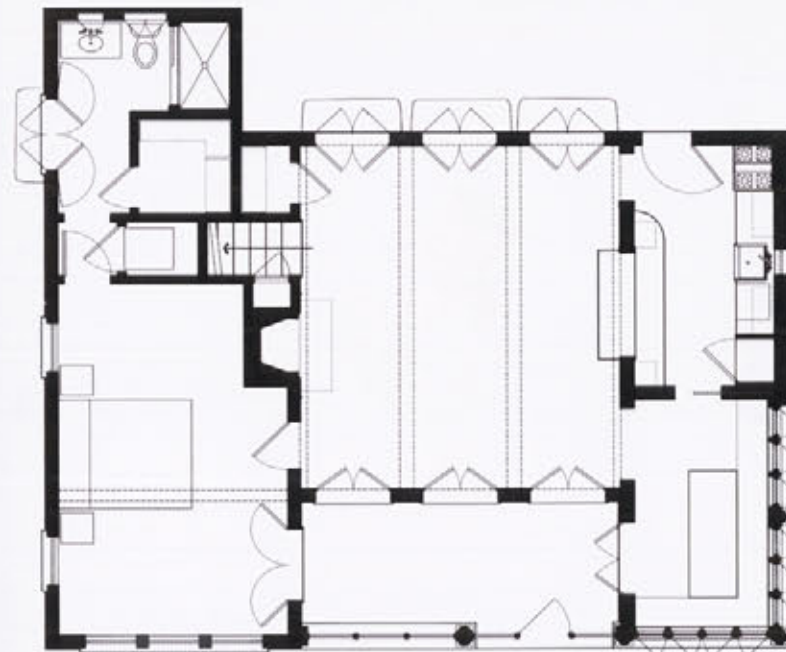


G. P. SCHAFFER ARCHITECT



**W**HEN GIL SCHAFFER MADE HIS FIRST VISIT for this renovation, his driving directions were to “look for the ugliest house on the lake.” That characterization was probably generous. The existing house was depressing from the moment of arrival. Its exterior was clad in aluminum siding, with details of equal quality, ranging from aluminum gutters and leaders to Depression-era windows and doors. Painted wood sticks supported the roof of a wraparound porch that obscured most views of the lake and kept daylight out. The interiors were a warren of tiny rooms, and highly restrictive zoning ensured that the footprint could not be expanded by even one inch. The landscape around the house was similarly unpromising, but the idyllic site overlooking a large lake in northwestern Connecticut justified a call for professional help.

Schafer relocated the entrance to face the lake, reallocated floor area from the covered porch to the interior, rearranged partitions, and reshuffled or eliminated some spaces. He also moved the kitchen to overlook the driveway side and replaced it with the master bedroom, for which the former maid’s room now serves as a closet. The exterior received the same level of makeover. Doric columns and framed panels now enclose the corner of the porch facing the lake, creating a sunny dining room while enriching the texture of the facades. Multipane sash and French doors have replaced existing units, with additional openings created to admit more daylight and



The master bedroom, the dining room, and a screened porch overlook the lake while the dock offers an even closer view of the water.

The outdoor shower at the back of the house takes advantage of the natural landscape.